



PortAventura World

[Go to guide](#)





What this covers

Click a tab to jump ahead to a section

1. The Parks:
 - PortAventura Park
 - Ferrari Land
 - Caribe Aquatic Park
2. Ticket Types
3. Getting there
4. Location



I. The Parks



PortAventura World is split into three theme parks:

- * PortAventura World (Open all year round, all day with some later nights, check website)
- * Ferrari Land (Open all year round, 4:30pm-10pm)
- * Caribe Aquatic Park (Open end of May to end of September (see website) mainly 11am-6:30pm)





PortAventura Park

A quick overview of the main theme park:

- 6 fun-filled worlds to explore.
- More than 40 rides.
- Wide variety of international cuisine.
- Tons of shows and parades.
- Character meet and greets with Woody the Woodpecker and all your favourites from Sesame Street.
- Fast track is available on site on the day

DON'T FORGET!

Every evening the parade rolls through Mediterrània before park close!
It's a great way to finish up their day seeing some of their favourite characters



A snippet into the Worlds

Far West

Put yourself in the shoes of a real Far West cowboy in this area inspired by the North American culture.

With key attractions such as the duelling Stampeda, Uncharted and Silver River Flume, for the smaller kids, the Carousel and Wild Buffalos bumper cars are some highlights.

MUST DO SHOW - Visit the stunt show spectacular West Gold Frenzy!

MUST DO FOOD - Stop by the Spirello hut for a BBQ potato stick snack!



México

Feel the adrenaline rise as you free fall 100 metres on Hurakan Condor, and discover the hidden secrets of the mine on El Diablo.

MUST DO SHOW - Visit Mexico Lindo and enjoy being dazzled while you tuck into the best Mexican dishes.

MUST DO FOOD - Wanting something sweet? Head over to Taxco for a sugary pick me up! Or if you are wanting a break in the sun, try La Cantina for a whole range of yummy meals.

SésamoAventura

Come and discover SésamoAventura, the area designed especially for kids, Bert, Ernie and the rest of the Sesame Street gang are waiting for you! Find rides such as Street Mission and kiddie coaster, Tami Tami.

MUST DO SHOW - Visit Cuidemos el Planeta with Oscar and the gang, little ones will learn the importance of reduce, reuse, recycle.

MUST DO FOOD - Quick service La Cocina De Epi has it all from pizza's to burgers, there is something for everyone here!



A snippet into the Worlds

China

Conquer the skies 76 metres in the air on Shambhala, PortAventura Park's highest roller coaster, and brave the 8 loops of Dragon Khan at 110 km/h.

Feeling warm in the Spanish heat? Head over to Angkor for some competitive family fun.

MUST DO SHOW - Prepare to be blown away by some of the biggest bubbles you've ever seen in Carnival Magic Bubble Show!

MUST DO FOOD - Stop by Canton for their iconic spring rolls, noodles and desserts!



Mediterrania

Inspired by a fishing village, speed lovers can make their way to Furius Baco where they will go from 0 to 135 km/h in only 3 seconds. Take a boat and sail to China; or catch a train at the Estació del Nord to Far West.

MUST DO SHOW - The daily parade at the end of the day, with shows like fireworks and lake displays during special events!

MUST DO FOOD - Head to Puntos De Alimentacion Mediterranea for the best yogurt pots around!

Polynesia

With attractions like Tutuki Splash, Canoes, and Kontiki, the best rides to experience the most tropical world of the park, discovering a whole range of cultures throughout.

MUST DO SHOW - REC® Experience is the most terrifying trails with characters from the REC® film franchise will do what it takes to make sure you don't escape. (Upcharged between £5-10 subject to availability)

MUST DO FOOD - Head to Puntos De Alimentacion Poly for the delish snack bar!



PortAventura Park Rides



Key Thrill Rides:

- Shambhala
- Dragon Khan
- Stampeda
- Uncharted
- Furious Baco
- Hurakan Condor
- Kontiki
- Tutuki Splash

Key Family Rides:

- El Diablo
- Toma Hawk
- Street Mission
- Estació del Nord train
- Angkor
- Silver River Flume
- Carousel
- Grand Canyon Rapids



Key Kiddie Rides:

- Canoes
- Tami Tami
- Coco Piloto
- Magic Fish
- Tea cups
- Wild Buffalos
- Armadillos
- Los Potrillos



PortAventura Park Character

Meet & Greets



SésamoAventura

Throughout the day you'll find Elmo, Cookie Monster, and Grover roaming the area as well as Bert and Ernie making a frequent appearance near the stage show!

México

The famous Spanish explorer (from the Tad the Lost Explorer films) often has a dedicated meeting spot in this area.

Far West

The park's mascots are most frequently found hanging out in the Far West (near the Saloon). Head to Casa De Woody's for a 1 on 1 experience with them!

FYI

Character schedules change daily based on the weather and showtimes. Recommend downloading the PortAventura World app before their visit as it has a real-time "Characters" tab that shows exactly who is appearing where and at what time.





Ferrari Land

Ferrari Land at PortAventura World in Spain (opened 2017) is a theme park dedicated to Ferrari, featuring Europe's tallest and fastest roller coaster, Red Force (112 meters, 180 km/h). It is designed as a half-day experience featuring Italian-themed streets, a total of 16 attractions and games like the F1 simulators.

(Opening hours 4:30pm-10pm)



Rides in Ferrari Land

Key thrill attractions:

- * Red Force
- * Flying Dreams
- * Pit Stop Record
- * Pole Position Challenge
- * Racing Legends
- * Thrill Towers

Key family attractions:

- * Crazy Pistons
- * Champions Race
- * Flying Race
- * Junior Red Force
- * Kids Tower
- * Maranello Grace Race

Fast track is available on site on the day



Food in Ferrari Land

With tons of different food options there is something for everyone, from sweet treat stands to sit down meals. Some recommendations are:

- Trattoria Maranello - table service with Italian cuisine (<-- pictured here)
- Pit Lane - quick service with burgers, pizzas and salads.
- Ice Cream Box - everything from ice creams to crepes.





Entertainment in Ferrari Land

Acrobatic Show Ferrari Land is an acrobatic show in the Ferrari Land pits

Sports meets circus with this one of a kind show, a perfect fun filled break from the rides whilst tucking into an ice cream in the sun! *(Usually every hour but check the board times at the front of the stage for details.)*





Caribe Aquatic Park

A quick overview of the water park:

- 16 attractions and slides.
- Wave pool, kids play areas and lazy river.
- A variety of on-site food and drink options.
- On-site shop with everything from towels, sun cream etc.
- On-site fast track options are bookable on the day.
- Water proof phone cases available to buy on the day.

Caribe Aquatic Park Attractions

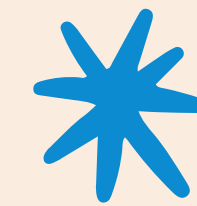


Thrill slides:

- Barracudas
- Cyclon Tropical
- El Tifon
- El Torrente
- King khajuna -
Their tallest and
fastest slide!

Family slides and zones:

- Rapid Race
- Playa Paraiso
- El Triángulo de las
Bermudas
- El Galeon Pirata
- Mambo Limbo



Kiddie slides and zones:

- Cayo Cookie
- La Laguna De
Woody
- Junior body slides
- Sesamo Beach
- Zona Indoor zone



2. Ticket Types



We sell a whole range of tickets, from mutli day, multi parks to open day single park tickets.

Here's a breakdown of the different tickets we offer, along with the links.

To visit our PortAventura World landing page click [here](#)





2. Ticket Types

Single day dated tickets

- *PortAventura Park One Day Ticket - click [here](#)
- *PortAventura Park Day Trip from Barcelona - click [here](#)
- *Ferrari Land One Day Ticket - click [here](#)
- *Caribe Aquatic Park One Day Ticket - click [here](#)
- *PortAventura Park & Ferrari Land One Day Ticket - click [here](#)
- *PortAventura Park & Ferrari Land Full Day Trip from Barcelona - click [here](#)



(FYI - for all dated tickets, their visit must match the date booked, otherwise they won't be granted access into the park.)





2. Ticket Types

Multi day dated tickets

- *PortAventura Park and Ferrari Land 2 Day 2 Park Ticket - [click here](#)
- *PortAventura Park, Ferrari Land & Caribe Aquatic Park 2 Day Ticket - [click here](#)
- *PortAventura Park & Ferrari Land 3 Day Ticket - [click here](#)
- *PortAventura Park, Ferrari Land & Caribe Aquatic Park Ticket 3 Day Ticket - [click here](#)



(FYI - for all dated tickets, the first day of access must match the date booked, and the remaining days need to be used within a 5-day window from that date.)





2. Ticket Types

Open dated tickets

- * PortAventura Park 1 Day Non-Dated Ticket - [click here](#)
- * PortAventura Park & Ferrari Land 2 Day Non-Dated Ticket - [click here](#)
- * PortAventura Park & Ferrari Land 3 Day Non-Dated Ticket - [click here](#)



3. Getting there *

There is a few different ways you can get to PortAventura World, and although we don't sell flights or car hire, it might be handy to know when talking to customers who are thinking of booking.

This section will also list (and link) tickets we sale that include transfers from Barcelona.





3. Getting there



Ticketed transfer day trips - From Barcelona

For people who are wanting a day of fun to break up their city stay, we have the below two options for customers (linked):

- *PortAventura Park Day Trip from Barcelona - [click here](#)
- *PortAventura Park & Ferrari Land Full Day Trip from Barcelona - [click here](#)

Both products include the tickets themselves into the parks and round trip air-conditioned coach transportation from Barcelona.

(pick up and drop off location - Julia Travel office, Estacio del Nord, ground floor, platform 19)





3. Getting there



FYI if customers ask - Visitor Parking

For day visitors, the resort provides a large parking lot with easy access to the theme parks.

- *Standard Cars: Approximately €12–€15 per day.
- *Preferential Parking: For a closer spot to the entrance, typically available for roughly €14.50–€17.
- *Motorcycles: €3.50–€4 per day.
- *Motorhomes & Caravans: Day parking is generally the same rate as cars, though overnight stays require using the dedicated Caravan Park.





3. Getting there



FYI if customers ask - Airports

You've got two options depending on when you go:

***Reus** - 15 minute drive, can easily get a taxi/shuttle for around £20-30 on average. However if travelling from the UK they only have flights over peak months so one to look out for in advance.

***Barcelona** - Just over an hours drive, not as likely to get a taxi on the day however plenty of pre-book transfer options or car hire available, much more flights all year round.



4. Location

PortAventura World is just an hour outside of Barcelona (click [here](#) for our Barcelona landing page), here is a few products that they might want to add onto their trip!

* Hop-On Hop-Off Barcelona City Tour - click [here](#)

* Go City: Barcelona Explorer Pass - click [here](#)

* Park Güell Walking Tour - click [here](#)

* Sagrada Familia Skip the Line Guided Tour - click [here](#)

* Sagrada Familia with Towers Skip the Line Ticket - click [here](#)

